



NEIGHBOURHOOD EMERGENCY PREPAREDNESS PLAN

Burton, BC



Table of Contents

OVERVIEW & PURPOSE OF THIS PLAN	3
COMMUNITY OVERVIEW	4
BURTON EMERGENCY PLAN MAP 7 NOTES.....	5,6
THE EMERGENCY CYCLE	7
COMMUNITY/NEIGHBOURHOOD RISK FACTORS.....	7,8
COMMUNITY/NEIGHBOURHOOD RESPONSE ASSETS.....	8
COMMUNITY VULNARABILITIES.....	9
EMERGENCT MITIGATION.....	10
EMERGENCY PREPARDNESS.....	10
EMERGENCY NOTIFICATION SYSTEM.....	10
PERSONAL & FAMILY EMERGENCY PREPARDNESS.....	11
NEIGHBORHOOD EMERGENCY PREPARDNESS.....	11
IN AN EMERGENCY.....	11/12
SHELTER IN PLACE.....	12
EVACUATIONS.....	13/14/15
AFTER AN EMERGENCY.....	15
FOR MORE INFORMATION.....	15

OVERVIEW & PURPOSE OF THIS PLAN

The Burton Neighbourhood Emergency Preparedness Plan was developed collaboratively with community members and RDCK emergency management personnel.

It is intended to be an 'all-hazards' plan - the plan is designed to apply to any kind of hazard that may affect the community. However, as part of the development process, the authors did consider the types of hazards likely to affect the area, to analyze the community resources available and the emergency measures required.

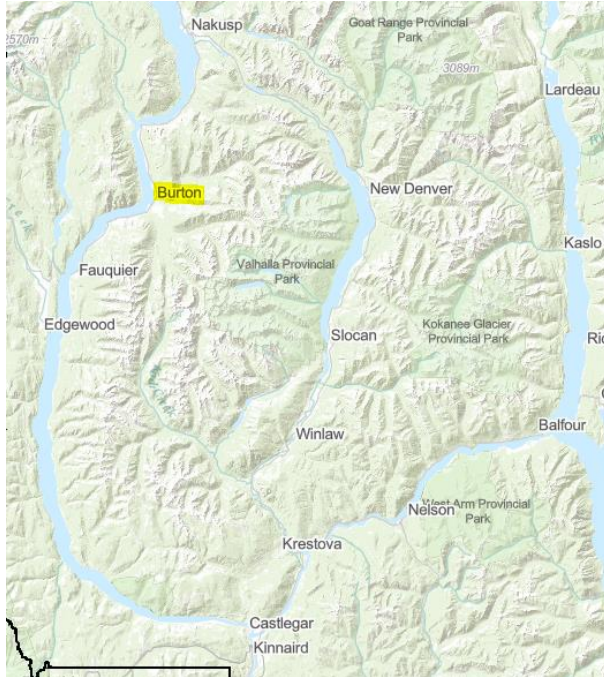
The magnitude, scale and complexity of emergencies varies from a minor incident impacting one or two people, to major disasters like wildfires that might affect the whole community. The plan is designed to provide guidance whatever the scale of the emergency.

By their very nature, no two emergencies are the same, and so no two responses can be the same. This plan establishes fundamental principles and protocols that will be used to guide each individual response.

Publications issued by the United Nations (the Sendai Framework) and the Province of BC (Addressing the New Normal – 21st Century Disaster Management in BC – “the Abbott-Chapman Report”) inform us that Emergency Planning and Preparation must be a collaborative process that includes the residents in our communities.

COMMUNITY OVERVIEW

The Village of Burton is a small community situated on the eastern shore of Lower Arrow Lake, on Hwy 6 36 km (22 mi) southwest of Nakusp in the Kootenay Rockies.



Demographics:

Burton has a population of approximately 250 permanent residents and another 50-75 seasonal. There are approximately 50 school age children or younger, 140 people aged 18-64, and 60 people 65 and over.

Land Use:

Mainly Single-family homes

There are no seniors or sheltered care facilities, however, there are many seniors who live in their own homes in the area.

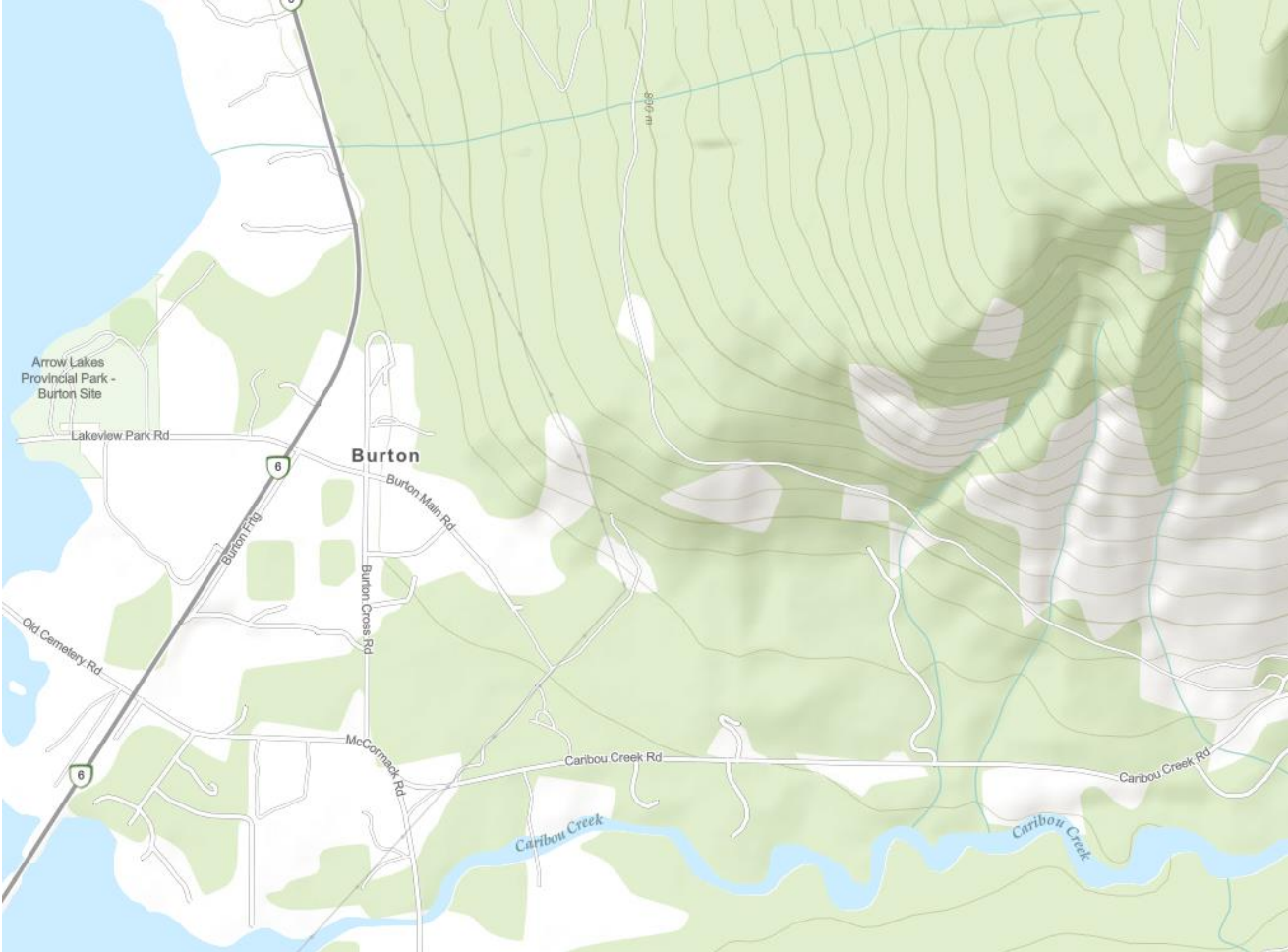
No significant industry.

There is one large farm operation as well as an Animal Sanctuary, both on McCormack Rd, that will possibly require evacuation of animals.

Burton sees tourism to the local Campground, Cidery and local Businesses, plus there are seasonal homes which increase the population in the summer months.

BURTON EMERGENCY PLAN MAP

For the purposes of this plan, the neighbourhood is considered to extend from Adshead Rd in the north, Caribou Creek Road to the east and bordered by Burton Forest Service Road and McCormack Road to the south.



NOTES:

Primary neighbourhood contact is Fire Chief Brian Harrop: Tel. 250-265-3492.
harropbrian9@gmail.com

Assembly point: Burton Community Hall (equipped with a generator) and plans for Air Purification.

Critical Infrastructure:

Fire Hall 250 265 4277 (when manned)

Community Hall

Burton Elementary school 219 Burton School Rd, Burton

Burton City Cider 5470 Highway 6 Burton

Caribou Service 5549 Highway 6 Burton

Burton Historical Campground 145 Lakeview Park Rd. Burton

Police. RCMP detachment in Nakusp 250-265-3677.

Medical. The nearest Clinic 250 265 3694 & Hospital 250 265 3622 are in Nakusp.

Communications: Currently in a serious Emergency the sirens at the Fire Hall will be activated

Evacuation Route: Depending on the Emergency, i.e.: fire, major accident etc. the residents will be informed as to which way to leave the area, either by Highway 6, Caribou Creek Rd. or McCormack Rd.

Burton maintains a Volunteer Fire Department.

In case of Fire, contact Margret Simpson at 265 4348 or Wayne Cromwell at 265 3820

EMERGENCY CONTACTS

Police, Fire, Ambulance
911

BC Wildfire
1-800-663-5555 or *5555

Gas Leak
1-800-663-9911

Roads and Highways (YRB)
1-888-352-0356

Power Lines

Fortis: 1-866-436-7847

BC Hydro: 1-800-224-9376 or *49376

Nelson Hydro: 1-877-324-9376

Floods, Landslides, Spills & Other Hazards
1-800-663-3456

RDCK Emergency Operations Centre
250-352-7701 or 1-866-522-7701



Emergency
Management

rdck.ca

THE EMERGENCY CYCLE



It is recognized that the 'cycle' of an emergency can be broken down into four phases: mitigation, preparedness, response & recovery, and that this is a recurring loop, as illustrated in the graphic above.

In the RDCK, we have observed growth in the severity & frequency of major emergencies in recent years and we anticipate that this will continue as we experience the impacts of climate change.

As such, more must be done to maximize the resilience of our region by mitigating and preparing for emergencies.

Additionally, there is a substantial cost benefit to building resilience; estimates vary, but it is suggested that for every \$1 spent on mitigation and preparedness, \$6 dollars will be saved (avoided) on Response and Recovery costs.

COMMUNITY/NEIGHBOURHOOD RISK FACTORS

Wildfire

Possible Flooding.

Hazardous material spills or fires on the Highway (Hazmat)

Land & road erosion from high run off/lake water level

Power outages

Road closures due to road collapse etc.

Land slides

Identify Wildfire risk areas in and around our community.

We are surrounded by treed areas, but we also must realize that we have areas inside the Village core that are heavily treed, such as the area between Highway 6, McCormack Rd and Burton Cross Rd and the area between Burton Cross Rd., Burton Main Rd. and McCormack Rd./Caribou Creek Rd. If a fire was to start in one of these areas, it would take a very fast, coordinated response by our Fire Dept., residents, equipment and possibly BC Wildfire resources to stop it from spreading to homes.

Therefore, the **Fire Smart Program** for all treed areas in our community is strongly recommended. (See Emergency Mitigation), as well as due diligence by all community residents.

COMMUNITY/NEIGHBOURHOOD RESPONSE ASSETS

Burton has people trained as first aiders (all the Volunteers Fire fighters) and 4 AED machines. The AEDs are located year-round at the Community Hall, a compartment on the west wall of the Fire Hall, in one of the Fire Trucks and a seasonal one at the Campground washroom.

For smaller emergencies, not requiring evacuation:

Depending on the Emergency, contact the Fire Dept. and/or 911.

The nearest commercial accommodation, food store and restaurants are in Nakusp.

In case of evacuation:

Reception Centre: Depending on the nature and scale of the emergency, the Burton Community Hall will be used, unless the RDCK identifies a destination for evacuees out of the Burton area. Possible alternates include the elementary school or campground. If necessary, a location away from the Village will be selected.

Emergency Support Services.

The nearest ESS team is based in Nakusp.

There is an ESS Trailer containing cots, blankets and other supplies located in Nakusp.

These will be accessed by ESS personnel if required, contact the ESS Branch Director at the RDCK Emergency Operations Centre. 250-352-7701

For emergency transport, there is a school bus in the community, that can be used if necessary to evacuate students and/or residents.

COMMUNITY VULNERABILITIES

Elementary school Students will either shelter in place, be evacuated to the Community Hall, or be removed by the bus from the area.

Residents needing oxygen, wheelchair, or other assistance, should contact the Fire Chief, so he is aware of their needs. Priority will be given to those needing assistance.

Campground: Visitors may be unfamiliar with the area. Therefore, when an Evacuation Alert is issued, **ALL visitors will be instructed as to the direction to leave the area, ASAP, before an order is issued.** Moving them out before the order to given, will alleviate potential problems later.

Piece of Heaven Animal sanctuary. McCormack Rd. Have numerous large and small animals. They have been advised to make an Emergency Plan. There is a considerable number of undomesticated animals that may prove to be difficult to move.

Burton City Cider They have numerous sheep and a llama. They are currently in discussion with the Simpson farm about mutual aid.

Simpsons Farm Burton Main Rd. They have numerous sheep and horses. As above, they are in discussion with the Cidery about mutual aid and have enough trailers to move there animals.

McCormack farm. They have numerous cows and chickens and have fenced off the lower Wetland area as a secure paddock. It is a safe distance from any trees. Also, other farms have volunteered to move and board the animals if necessary.

For any location with large animals, we have seen from past years, when there is a fire in the valley threatening a community, people in the area will volunteer their trailers to move animals and/or their property to house animals.

Caribou Service has numerous vehicles and a shop with combustibles on site. Additional resources may have to be utilized. i.e.: sprinkler systems erected.

Aviation fuel storage. There are two operations during the winter months for heliskiing. Valkyr Adventures 250 269 7237, that fly from the Robazzo Rd. area and High Terrain Helicopters 250 265 3434, that fly from McCormack Farm. During the summer months, High Terrain flies to the lodges and neither have fuel storage on site.

Pump House on lower McCormack Rd. has a 72 hr. Diesel fuel backup, that can be refueled as needed.

Cell Phone Tower on Silver Queen Rd. has 72 hr. back up batteries.

EMERGENCY MITIGATION

The FireSmart program is a key tool to mitigate the risk that wildfires pose to populated areas.

The program centers around Home FireSmart home Assessments by a Wildfire Mitigation Specialist and the FireSmart Neighbourhood Recognition Program. Residents can call 1-250-352-1539, email firesmart@rdck.bc.ca or visit <http://www.rdck.ca/emergency> to find out more and book a home assessment.

More information is available at <http://www.rdck.ca/emergency>

EMERGENCY PREPAREDNESS

A representative of each Neighborhood Emergency Team (NET) are invited to attend the quarterly Emergency Preparedness Committee meetings facilitated by the RDCK Emergency Program Coordinator in Nakusp, to exchange updates and information relating to Emergency Preparedness. Currently this is the Fire Dept. Chief.

EMERGENCY NOTIFICATION SYSTEM

The RDCK emergency notification system is a tool used to communicate emergency information such as Evacuation Alerts & Orders

The emergency notification system complements the formal evacuation alert and order process which is outlined in this document, and it has several major benefits: (1) the alert system messages are almost instantaneous and will usually reach residents who subscribe to the system earlier than the notifications delivered door-to-door. (2) alert system messages are focussed; they are sent to the affected addresses only. (3) residents who are away from their homes can still receive the notifications. The system can send messages to smartphones, email, and landline phones, but it requires residents to sign up to receive the messages.

The RDCK website has the link to sign up to receive this service, <http://www.rdck.ca/emergency>

[It is strongly recommended that residents sign up for this service.](#)

Fire hall siren. Will be activated by members of the Fire Dept. in the event of a serious Emergency.

The Fire Dept. Call Tree System is currently used for Fire or other Fire Department responses.

PERSONAL & FAMILY EMERGENCY PREPAREDNESS

To build resiliency, all residents are advised to develop emergency plans for themselves, their family and pets, based on the principles of

Know the risks Have a Plan Assemble a Kit

An important aspect of preparedness is for residents to plan for where they will stay in the event of an evacuation.

The RDCK shares guidance for personal & family preparedness on our website:

<https://rdck.ca/EN/main/services/emergency-management/emergency-preparedness1/household-family-preparedness.html>

NEIGHBORHOOD EMERGENCY PREPAREDNESS

A cornerstone of community preparedness is an engaged and committed network of Neighbourhood Emergency Teams (NET's), made up of people who typically live near one another, and who will collaborate to support each other in case of emergency.

The RDCK supports the Neighbourhood Emergency Preparedness Program by posting updates and information on our website, here:

<https://rdck.ca/EN/main/services/emergency-management/emergency-preparedness1/neighbourhood-emergency-preparedness-program.html>

There is also an online community for RDCK NETs to ask questions and share learnings across the region. The RDCK Emergency Program Coordinator will facilitate access to the community for interested NET leaders.

IN AN EMERGENCY

Please call 911 for assistance.

Burton has the Burton B.C. Community Group Facebook and the burtonbc.ca website, these will be used to notify and update the Community in the event of any Emergency and to request assistance, if necessary, from not only residents in the area, but residents in other Communities, thru their Community Pages.

If necessary, there will be a public meeting called with information on the Emergency.

Medical assistance.

Hospital 250 265 3622

Paramedic 911

Pharmacy 250 265 2228

Contact ESS via Canadian Red Cross 1-888-800-6493 (24 hr)

Small scale incidents:

First Aid. All Firefighter have their First Aid Certificate, as do several residents. Some workplaces in community have personnel trained in first aid and first aid equipment onsite.

Fire Dept. Contact the Call Tree numbers below for Fire or other emergency response.

Large scale incidents:

Contact the Burton Fire department 250 265 4348 or 250 265 3820

Wildfire notification *5555 or 1 800 663 5555

Contact the RDCK Emergency Operations Centre at 250-352-7701

SHELTER IN PLACE (“SIP”):

For some types of incidents, it may be recommended for residents to Shelter in place, rather than to evacuate. e.g., Hazmat or power outage.

Information on how to SIP is available on the Federal Government webpage:

<https://www.getprepared.gc.ca/cnt/hzd/drng-en.aspx>

Residents should be familiar with the steps necessary to shelter in place, as part of their household emergency plan.

If, due to circumstances, SIP is not desirable or possible, the Community Hall can be opened and used.

Residents will be notified to SIP, using all means necessary, such as social media sites, Emergency Notification System, phone calls, door to door or using the Fire Truck load hailers.

EVACUATIONS:

Evacuations are an emergency measure that have significant impact on people's lives. However, in some emergencies, this may be the best way to protect the lives and wellbeing of people in the area.

If an evacuation is needed, the RDCK Emergency Program will work collaboratively with the relevant officials to support them with implementing evacuation plans.

In the RDCK, there is a three-stage emergency evacuation notification process: Alert, Order, Rescind.

Evacuation Alerts

If there is sufficient time, the RDCK Emergency Program will issue an evacuation alert via the RDCK Emergency Notification System. Information will also be posted on the RDCK Facebook page, website, and Twitter. This will include a map and a list of affected homes.

Residents will also be notified, using all means necessary, such as social media sites, phone calls, bulletin board, door to door or using the Fire Truck load hailers.

An Evacuation Alert means **be ready** to evacuate. It is time for residents to activate their emergency plans, assemble family and pets, collect their emergency grab & go kit and be ready to evacuate to their prearranged destination. Residents should notify friends or family members that they may be evacuating.

Residents needing additional time to evacuate, such as those with medical conditions or limited mobility should do so at this stage. (See Evacuation below)

Similarly, residents with Farms, the Cidery and Animal Sanctuary, that have large animals (horses, cows, llamas, etc.) should evacuate at the Alert stage, as priority will be given to human evacuees once an evacuation order is issued. All the above should have a plan in place, following guidance from the Ministry of Agriculture.

Evacuation Orders

If an evacuation becomes necessary, a notification will be delivered using the RDCK Emergency Notification System. The RDCK Emergency Program will also post information on its Facebook page and on the website @ <http://www.rdck.ca/emergency>

Residents will be advised by emergency services personnel, who will go door-to-door in the affected area to deliver printed Evacuation Orders to the occupants.

An Evacuation Order means **go now**. Residents in the evacuation order zone with a prearranged evacuation destination, e.g., at a friend's house or with family, should proceed there safely now.

Upon arrival evacuated residents are asked to self register online at <https://ess.gov.bc.ca>

Evacuees requiring assistance will be directed to a Reception Centre designated by the RDCK Emergency Program and identified on the Evacuation Order.

The evacuation order will provide specific instructions on emergency routes, assembly points and reception centres, etc. A sample order is attached for reference.

The RDCK Emergency Program encourages all residents to cooperate with the emergency services personnel for the safety and wellbeing of everyone involved. It is best to assume that residents will **not** be able to access the affected area while it remains on order. This is for everyone's safety and security.

Emergency Support Services:

Evacuees should contact their insurance representative or broker as soon as possible. Standard insurance policies provide coverage for some expenses, including accommodation.

<http://www.rdck.ca/EN/main/services/emergency-management/emergency-response1/emergency-resources.html>

Depending on need and the circumstances of the emergency event, Emergency Support Services ("ESS") may be offered for a short period of time.

<https://ess.gov.bc.ca/>

Evacuation Sample Order

Assembly points are planned at _____ and _____.), and will be coordinated with _____.

The primary evacuation route is _____.

The primary reception centre is planned at _____, where RDCK Emergency Support Services personnel will meet evacuees and provide further information.

**These are guidelines only and may need to change to ensure the safety of residents and responders.*

Rescind

When it is safe for residents to return home, the RDCK Emergency Program will issue a Rescind notice, which terminates an evacuation order, and allows residents to go home.

The area may remain on Evacuation Alert in times when the potential for further evacuations exists.

The Rescind Order will effectively terminate the availability of Emergency Support Services except under preapproved, exceptional circumstances.

AFTER AN EMERGENCY

Care should be taken in returning home as hazards relating to the emergency (such as flood water or burnt debris) may still be present. RDCK emergency personnel will provide guidance on what to expect and the recommended precautions.

<https://www.rdck.ca/assets/Services/Emergency~Management/Documents/2021-08-07-Returning%20Home%20Document.pdf>

<https://www.rdck.ca/assets/Services/Emergency~Management/Documents/2021-08-18 Structure Disposal Guide%20V2.pdf>

Insurance – Contact your agent.

Other supports e.g., Red Cross, thrift store.

MORE INFORMATION

<http://www.rdck.ca/emergency>
[Burton Fire Chief Brian Harrop at harropbrian9@gmail.com](mailto:harropbrian9@gmail.com)